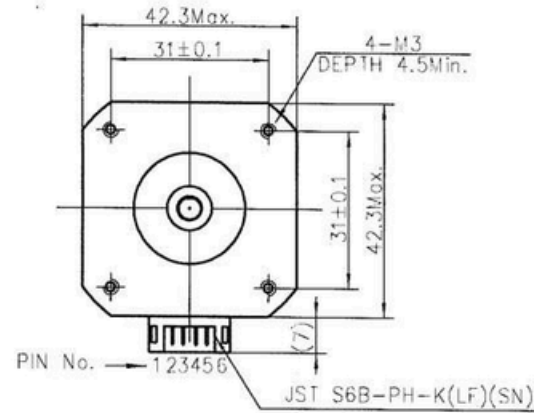
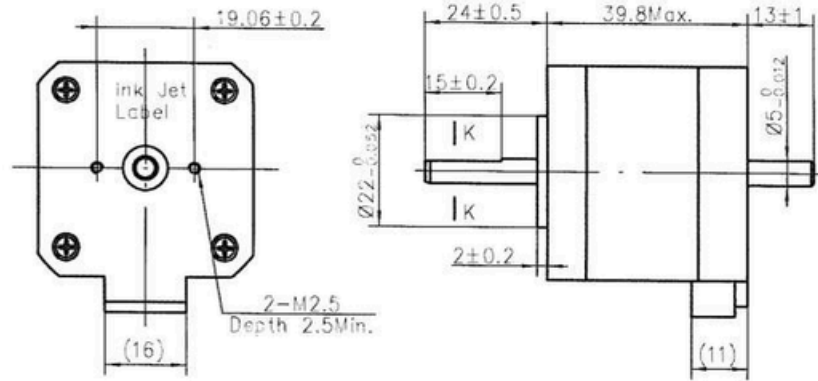
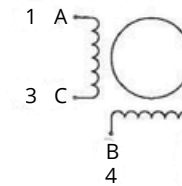


4611110011491



Wiring Diagram



Exciting Sequence vs. Direction of Rotation

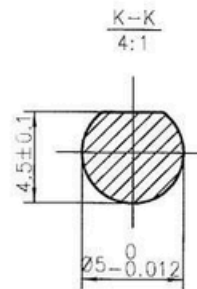
STEP	A	B	C	D
1	+	+	-	-
2	-	+	+	-
3	-	-	+	+
4	+	-	-	+

CW

Clockwise view from mounting side

Specifications

1. Number of Phase	2
2. Step Angle	1.8°
3. Rated Voltage	2.97V DC
4. Rated Current	1.5Amp
5. Holding Torque	0.5N.mTyp (Two phase on/rated current)
6. Phase Resistance	1.98ohm ± 10% (20°C)
7. Phase Inductance	4.3mH ± 20% (1kHz 1V rms)
8. Rotor Inertia	57g.cm ²
9. Motor Weight	280g
10. Insulation Class	B(130°C)



Label Detail

MOONS' STEPPING MOTOR
TYPE MS17HD2P4150-M
XXXXXXXX YY/MM/DD

Work Order Date Format

			Unit: mm	Approve			<h1>PIVEXIN</h1> <h2>TECHNOLOGY</h2>	Type: MS17HD2P4150-M	Rev.A	SCALE 1:1	Sheet 1 of 1
			FIRST ANGLE METHOD	Standard							
			Tolerance for linear and regular dimension without individual tolerance indications GB/T 1804-m egv ISO 2768-1: m	Technology							
			Geometrical tolerance for features without individual tolerance indications GB/T 1184-K egv ISO 2768-2: K	Check							
A	Original revision	2013.04.03		Design							
REV.	REVISION RECORD	DATE	UNLESS OTHERWISE SPECIFIED	NAMES	SIGNATURE	DATE					